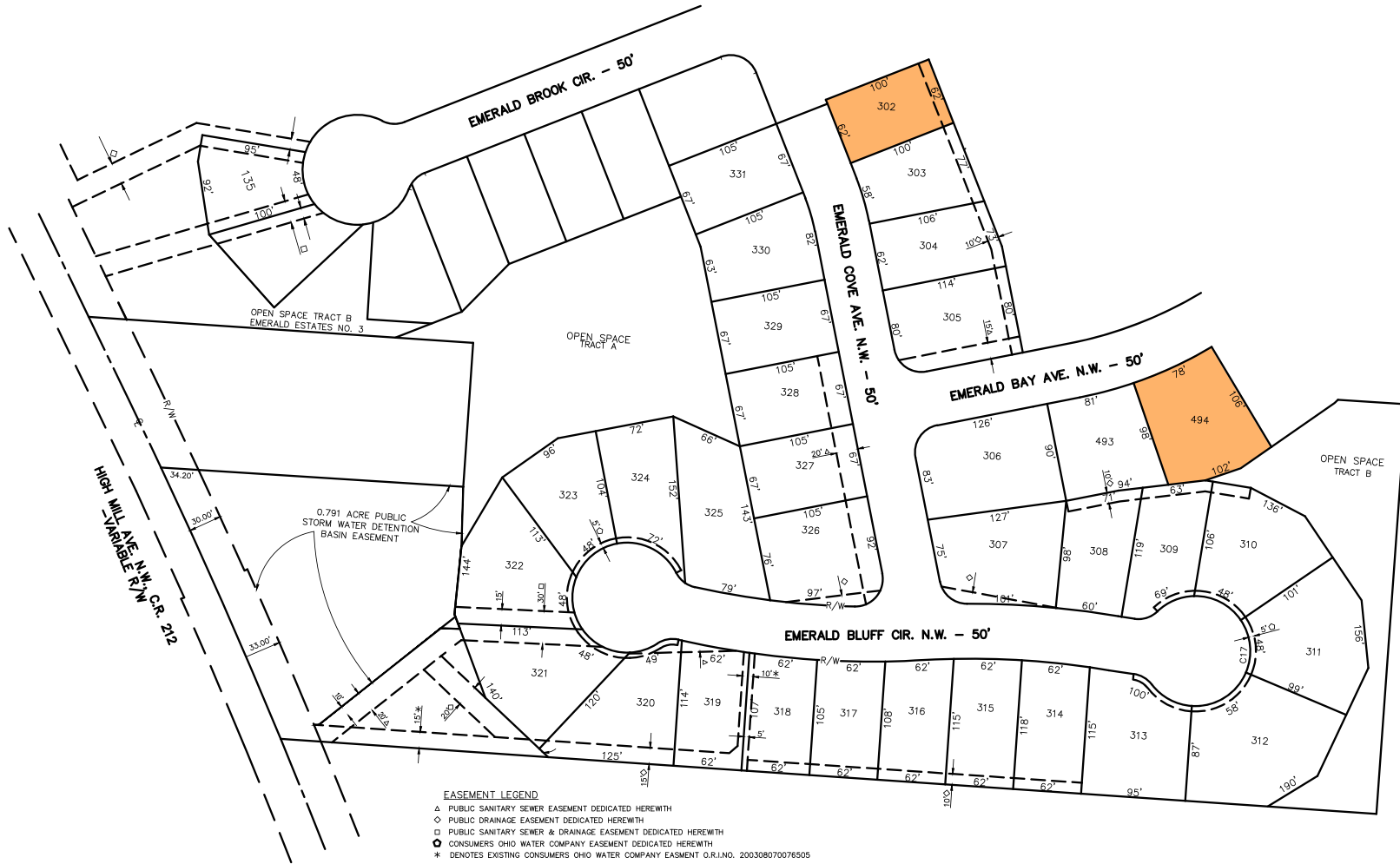


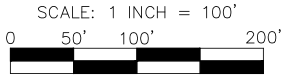
R:\Stark\Townships\Jackson\7\Gnu\td\SMEMRLD\2019 Emerald Estates Marketing Plat.dwg; 10/10/19 - 9:57am; hacco-op



EASEMENT LEGEND

- ▲ PUBLIC SANITARY SEWER EASEMENT DEDICATED HEREWITH
- ◇ PUBLIC DRAINAGE EASEMENT DEDICATED HEREWITH
- PUBLIC SANITARY SEWER & DRAINAGE EASEMENT DEDICATED HEREWITH
- CONSUMERS OHIO WATER COMPANY EASEMENT DEDICATED HEREWITH
- * DENOTES EXISTING CONSUMERS OHIO WATER COMPANY EASMENT O.R.L.I.NO. 200308070076505

THE VILLAS AT EMERALD ESTATES



SMITH DEVELOPMENT CORPORATION

COPYRIGHT© 2017 HAMMONTREE & ASSOC. LTD.

HAMMONTREE & ASSOCIATES, LIMITED
 ENGINEERS, PLANNERS, SURVEYORS
 5233 STONEHAM RD. NORTH CANTON, OH 44720
 PHN: (330) 498-8817 FAX: (330) 499-0149
 TOLL FREE: 1-800-394-8817
 www.hammontree-engineers.com



SMITH HOMES 330-244-9080 smithhomes.com 6360 Promler Ave. NW North Canton, OH 44720